

## Electromagnetic Locks

### KML-5000G : Electromagnetic Gate Lock

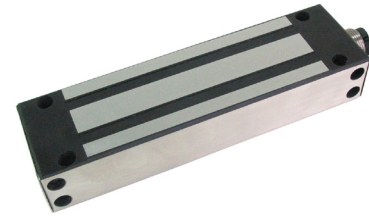
---

#### SPECIFICATION

The KML-5000G is an electromagnetic gate lock which can be used on single, surface mounted or sliding doors. It has a holding force of 540KGS and dual voltage with lock sensor. It also features a built-in voltage spike suppressor and is C-Tick, UL Listed and CE approved.

#### Dimensions

203L x 63W x 40D (mm) / 7.99" x 2.87" x 1.57"



#### Application

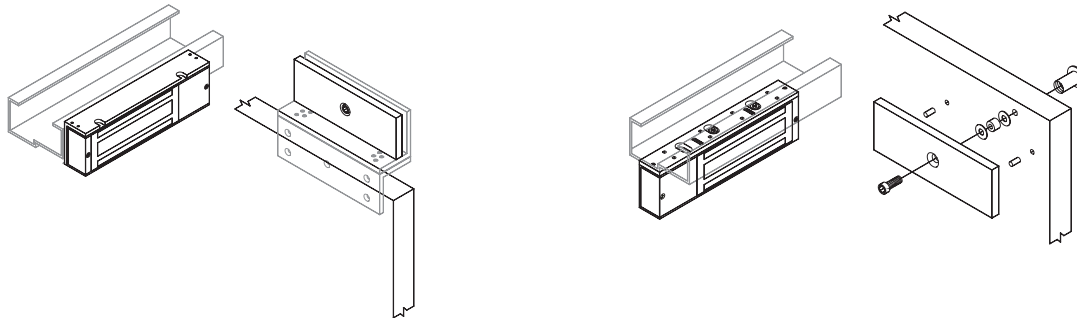
- Surface Mounted
- Single Door
- Sliding Door



#### Features

- Holding Force: 1200LBS (540KGS / 5400N)
- Current Draw: 500mA / 12V, 250mA / 24V
- Dual Voltage: 12 / 24VDC
- Stainless Steel Housing, Weather Proof
- Built-in Voltage Spike Suppressor
- Lock Sensor (reed switch)
- CE Approved
- C-Tick

#### Typical Installation:



PRODUCT CODE	DESCRIPTION
KML-5000G	EML Gatelock EML 1200LBS/540KGS